

Your Kitchen Layout

Use this area to draw out your kitchen

Floor 2 Ceiling



Home or Office
New Construction or Remodel

We Are Your Design Partner!

Measuring For Your New Kitchen

Floor 2 Ceiling
319 Neosho Street
Burlington, Kansas 66839
(620) 364-3004
(620) 364-3008 Fax

Name	Address		
Phone	City ST Zip		
Work Phn	This kitchen layout/design is for	Remodel	
Fax		New Construction	

Thank You for Choosing Floor 2 Ceiling for your Kitchen Design/Remodel project!

Visit our gallery at

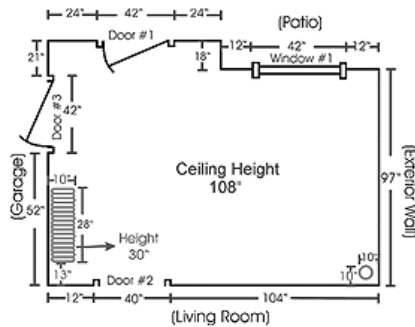
www.floor2ceilingonline.com

Step-By-Step Guide to Drawing and Measuring For Your New Kitchen

If you are remodeling, do not include current cabinetry or other furniture that will not be kept, such as kitchen tables, in your measurements.

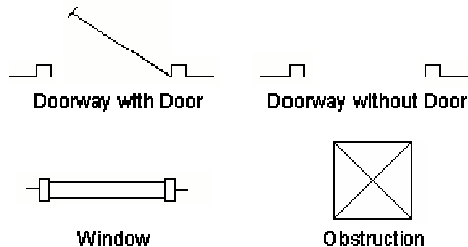
All of your measurements should be in inches. For example, if you measure a wall that is 10 feet, write it as 120" (a quotation mark denotes inches).

Sample Drawing of a kitchen layout



Step 1

Draw a rough outline of your kitchen. Use the following symbols in your drawing for doors and windows. For doorways with doors, draw the doorway according to which way the door swings.

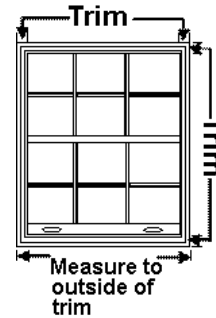


Step 2

Draw in any obstructions such as radiators, pipes, sink plumbing, etc., that you either cannot or do not want moved.

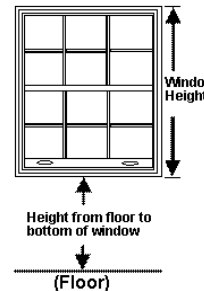
Step 3

- Beginning at the top left corner of your drawing measure to the first window, door, or wall. Continue clockwise around the room until each wall, window and door has been measured.



When measuring doors and windows the trim is considered part of the door or window. Measure from the outside of the trim on one side to the outside of the trim on the opposite side.

- Measure the ceiling height and write it in the center of your drawing. Sometimes, especially with older homes, it is a good idea to take measurements in a few different areas of the kitchen. Ceiling heights, even in the same room, can sometimes vary by as much as a few inches.
- Measure from the floor to the bottom of each window and also measure the overall window height. A table is provided below for your window measurements.



Remember to begin at the top left window in your drawing and to work clock-wise.

Window	Distance from floor to bottom of window	Height of window including trim
1	Inches	Inches
2	Inches	Inches
3	inches	inches
4	Inches	Inches
5	Inches	Inches
6	inches	inches

Step 4

- Beginning at the top left of your drawing, label the windows "Window 1", "Window 2", etc. in a clockwise order
- Again, beginning at the top left of your drawing, label the doors "Door 1", "Door 2", etc. in a clockwise order
- Next to each wall, write the name of the adjacent room. If the wall is an "outside wall" write "exterior wall."

Step 5

- Measure any obstructions such as radiators, pipes, etc. that you either cannot, or do not, want moved. If the obstruction is close to a wall, measure out from the wall to the edge of the obstruction
- Measure from the second closest wall to the edge of the obstruction.
- If the obstruction does not span the full height of the room, measure the height of the obstruction.

Check your measurements

If your room is rectangular add up the measurements of the parallel walls and make sure they match (or are at least very close). For example, in our sample drawing, you would take the overall measurements of the top wall and add them together. Then do the same with the bottom wall. Once you have added each wall's measurement check the totals to see if they match.

Top	$24" + 42" + 24" + 12" + 42" + 12" = 156"$
Bottom	$12" + 40" + 104" = 156"$
Left	$21" + 42" + 52" = 115"$
Right	$18" + 97" = 115"$

Please call or e-mail should you have questions about measuring or to schedule an appointment to have us measure your kitchen.

Floor 2 Ceiling Kitchen Designers
Shelly Kayton or Danielle Birk Ernst
(620) 364-3004 (M-F 10a-5p, Sat 9a-12 noon)

kitchendesigner@floor2ceilingonline.com
www.floor2ceilingonline.com